

Custom home

YOUR CUSTOM WARDROBE

We want you to be over the moon with your new wardrobe and we will work hard to make sure everything is just right



Let your children's room grow



A SPLASH OF COLOUR
Colour is everywhere; even the most modern of homes have it somewhere in the sea of white and shades of grey.

Custom
WORLD

the space
experts™

BEDROOMS & MORE....

We can customise any
room in your home

Check out
Bedrooms

For wardrobe
inspiration see
Page 14



CONTENTS

CUSTOM HOME MAGAZINE

Custom
WORLD
EST 1982



Check out Sliders

For inspiration on sliding doors see Page 16



Check out Studies

For great home offices ideas see Page 28

- 4 WHY CUSTOM WORLD?**
If you are looking for truly bespoke design solutions that match your exact space and storage requirements Custom World will deliver.
- 5 WHAT OUR CUSTOMERS SAY**
At Custom World we are proud of the excellent reputation we have built up since we were established in 1982.
- 6 A SPLASH OF COLOUR**
Colour can influence mood, brighten a dark room, complement furnishings and inspire interior design. We look at the alternatives that are transforming our living spaces.
- 7 LET YOUR CHILDREN'S ROOM GROW**
It probably won't come as a big shock to you but children don't stay little forever.
- 8 OPEN PLAN NEEDS STORAGE**
More and more of us are embracing the concept of open plan living. The idea of all of the family in one room is appealing, living together and enjoying life.
- 9 CREATING SPACE**
In a big room there is a danger of misusing space and losing valuable storage.
- 10 WHEN YOUR ROOM IS NOT SO SPARE**
We show you how spare rooms can be the most versatile rooms in your home. Bedroom, study, workspace, playroom; the combinations are endless.
- 11 GO BEYOND KERB APPEAL**
Fitted furniture can add space, storage, style and value to your home.
- 12-13 THE SPACE EXPERTS**
What makes Custom World the Space Experts?
- 14-23 BEDROOMS**
From sliding door and hinged wardrobes, in an enormous range of materials and colours, to custom headboards; we have the bedroom for you.

- 24-27 LOUNGE**
Fitted furniture can transform lounges into sleek, spacious places to relax, socialise and enjoy your TV and media collection.



Check out Lounges

For home entertainment spaces see Page 27

- 28-31 HOME OFFICE AND STUDY**
Workspaces get a makeover with our custom approach to your busy life. Hidden filing, clear desk space and clean lines are here to stay!
- 32-33 CHILDREN'S BEDROOMS** 
We help transform kids bedrooms into fun places to sleep, play and learn. As children grow and adapt so do these rooms. Check out lots of ideas and inspiration for small and large spaces.
- 34 BATHROOMS**
From little spaces to luxurious retreats; great style and maximum storage come together in our bathroom solutions.
- 35 FREE STANDING AND MORE**
We are called Custom World because there really is no limit to what we can build. Here are just a few examples of free standing furniture and special projects we have designed, built and installed for our customers.
- 36-37 FINISHING TOUCHES**
Those little details matter. See our wide range of features and fittings that make your design come to life.
- 38-39 DESIGN**
Some tips on choosing your furniture and a space to think about your needs, in readiness for your free design visit.

HERE'S WHY CUSTOM WORLD

Reasons to buy from Custom World

1. You get quality hand-made fitted furniture
2. You get a FREE design survey
3. You'll get up to 50% more storage space
4. Your furniture is designed to fit any space
5. Reasonable prices to suit
6. A full 10 year guarantee
7. Great Value



Expert advice

Since 1982 we have fitted over 10,000 rooms across Dorset, Hampshire and Wiltshire, so you'll be in safe hands.

One of Custom World's designers will explain to you how your fitted bedroom furniture will be exactly made to measure to fit your room, and talk you through the differences between hinged door wardrobes and sliding door wardrobes.



Our promise to you

At Custom World, we value all our customers and pride ourselves on our excellent reputation for Quality Customer Service. However, we don't rest on our laurels and

we constantly work on ways to improve and develop our services to you. One thing we do promise, is that we always endeavor to deliver the best service and quality to you.

We offer a ten year guarantee on all our furniture.



A large percentage of our custom is repeat or recommendation which is why we understand the importance of a guarantee that gives you peace of mind. Your furniture is carefully handmade in our Dorset workshops, and then installed in your home by our team of employed fitters.

"I just wanted to thank a huge thank you to all the team at Custom World, especially Darren for recommending the company and building us the beautiful bedroom furniture, Charlie for her wonderful customer service and design ideas, and Vladimir who fitted it so perfectly and quickly

Thank you to everyone involved" Helen B

our website: www.customworldbedrooms.co.uk

WHAT OUR CUSTOMERS SAY

At Custom World we are proud of the excellent reputation we have built up since we were established in 1982.

The following testimonials sum up what we endeavor to achieve. For a larger list you can visit our website.



“ Our fitter did an amazing job, especially in the small room off the main bedroom. He had a relatively small space to work in and, additionally, had to cope with a sloping ceiling under the staircase. The final result is even better than we had hoped for and has greatly increased the usefulness of the space. As well as that, our fitter left the place immaculately clean when he went home at the end of each day. We will take great pleasure in showing off our new cupboards and wardrobes to our friends and relations and will have no hesitation in recommending your services.

Customer in Bournemouth, Dorset

“ Thank you for the excellent service we received in all dealings with Custom World. From ordering to job completion was made a pleasure for us by the staff. Add to that the quality of the materials and the superb workmanship - it was fantastic. It was truly one of the best experiences we have ever had with workmen coming into our house.

Customer in Poole, Dorset

“ Thank you so much for building our dressing room and bedroom wardrobes. We are so pleased with them and cannot believe how much more space we have to hang our clothes and put them away. You have given us more than 50% more space and I couldn't be happier.

Customer in Lyndhurst, Hampshire

Checkatrade
Where reputation matters



Scan to watch a customer testimonial!

A SPLASH OF COLOUR

But don't be afraid to be bold

Colour is everywhere; even the most modern of homes have colour somewhere in the sea of white and shades of grey.

Our sliding door wardrobe range has a wide choice of coloured glass and designs, from a splash of colour to a full striking wall.

If you have decided to add colour to your home, but are unsure of what colours to go for, you may want to think about the power it has over how you feel. Colour can influence your mood, from the calming and relaxing shades of blue and green to the more vibrant bright yellows and invigorating reds.

MOOD COLOURS:

Here are the basics, according to *The Color Scheme Bible* by Anna Starmer:

- Pink:** fun, lively, positive and feminine
- Red:** passionate, daring, intimate, comforting, stimulates appetite
- Orange:** stimulates creativity, evokes warmth and cosiness
- Yellow:** welcoming, sunny, and linked to promoting intelligence
- Green:** tranquil, invigorating, restful and balancing
- Blue:** clear thinking, calm, meditative
- Violet:** stimulating, sexy; blue-violets are cooling, spiritual

GETTING STARTED:

Like everything, the getting started part can often be the hardest, however, it helps if you start with a reference point. This could be a photograph that you love, a painting, or the colours that you love to wear and probably the biggest starting point for most of us is the colours you already have in your home.

No one wants to throw away their favourite items because they no longer match the new colour scheme, instead you are more likely to base your colours around them.

Think about what colours you are naturally drawn to; the ones that make you feel the way you want to in that particular room. Use the colour scheme bible to come up with more suggestions if you are stuck. This will help you narrow down your colour choices.

And you don't have to just stick to one colour for a room, you may want to mix it up and create the room that you have always wanted.

Look for inspiration everywhere. What is the view from your window? If you have a view of the sea that you love, draw your eye there by choosing a bold colour on that wall, in either a similar colour or a contrasting colour. You are framing your view with the best colour.

Think about the items that are already in your room that you want to show off and use your big colours to make them stand out. The neutral colours of black, white, silver, grey, and brown in our fitted furniture make good backgrounds to lots of bold colour.

Don't be afraid to be bold.

PAINTABLE DOORS

If you can't find the colour you are looking for, don't worry - we have the solution. We can provide your furniture with a special paintable surface, which means you can paint it in whatever colour you choose. What better way to create truly unique and personal furniture without compromise.



FOUR COLOUR RULES

1. More than one colour in any room can look great, but keep it to three colours maximum. If you are going with two bold colours, the third should be a neutral to give your eyes a break.
2. Think of the mood you want to create with your colour choices.

3. Start by choosing your boldest colour, and then choose the others with the first colour in mind.
4. Don't be scared! Paint is not permanent and you can always change it.



Let your children's room grow



It probably won't come as a big shock to you, but children don't stay little forever. In fact they get quite big, very quickly.



It probably won't come as a big shock to you, but children don't stay little forever. In fact they get quite big, very quickly.

With growing children comes their need for their own space, where within reason they can do as they want. Where once Thomas the Tank Engine and Fairy Princesses ruled the land, there is now a void and it can be an expensive one! You want a bedroom that they can grow into and not one that you are replacing every couple of years.

The easiest way to create a room that will grow with them is to plan ahead, with the knowledge that you have the reassurance of our 10 year guarantee on all of our products.

- Start with the storage in the room, true they may not always use it as you want them to; clothes are not always hung up on the hangers, t-shirts may be stuffed into drawers and not folded as you would like, and books may not be tidy on the book-shelf. But there will come a point when they will want to use it, even if it is just to hide all their mess away! And since most children whatever their age

have a lot of things to hide away it is a good job our fitted wardrobes are from floor to ceiling, giving you a lot of extra space.

- By keeping the design simple and practical, the storage will accommodate their changing requirements as they grow.

The simplicity of our Satus range makes it an ideal choice for children's rooms.

- Choose their bed to grow with them, rather than having to replace them every few years. Our cabin beds are perfect for children and teenagers with the added bonus of lots of extra storage; great...if your child's room is limited on space.
- Don't forget as your child gets older they will need somewhere to do their homework. You can maximise the space by including a fitted work station with additional storage and they will then have everything they need in their own room.

Soft furnishings are a great way to change the appearance of a bedroom quickly; lampshades, curtains, cushions and duvet covers. And they are relatively inexpensive, if you compare it to a complete bedroom overhaul.

If your child is interested then let them be involved in choosing the colours of their bedroom, whatever their age. Small children have big opinions about colour and who is the best character to have on their duvet cover. Just as older children will know the colours and posters that they will want on their walls, even if it is not to your taste!



OPEN PLAN NEEDS STORAGE



Fusion Luxe Range (Copper Stone / Ivory)

More and more of us are embracing the concept of open plan living.

The idea of all of the family in one room is appealing, living together and enjoying life. Plus, open plan living makes your house feel much more spacious, light and it's bang on trend, which is great for when you are thinking of selling.

With our ever increasing busy lifestyles, more of us are looking for convenience and sociability in our own homes and there are rumours that by 2020 the traditional dining room will almost be obsolete.

The ideal scenario is clean lines, clutter free and well... perfect, just like you see in all of your favourite home magazines and house programmes.

Don't Trip Over Each Other

You don't want to be getting in each other's way and if you are all going to be using the open planned space at the same time, you will need to plan.

Think about the activities you and your family will be using the living space for and then designate areas to those activities.

- Dining area, perfect for entertaining and also homework
- Relaxing area, maybe with a state of the art home cinema
- Space for playing
- Cosy area for reading

However if you don't get your planning right, you may not end up living the dream lifestyle you had imagined.

A single room where everyone wants to be, will mean that there will be lots of clutter, from children's toys, games consoles, craft bits, homework, books, DVDs and much more. The list is fairly endless and the more of you living in the house, the more there will be. Not quite the clean and un-cluttered lines that you dreamt of.

All of these activities will need storage, otherwise you will spend most of your time clearing the area, rather than enjoying it.

WHERE DO YOU WANT EVERYTHING?

You know how you want to live in your space, you want to be able to move around your room in a way that makes the most sense to you. Thankfully there are no rules, although it does help to have your dining area near to your kitchen, but if that doesn't work for you, don't do it.

UNCLUTTERED LIVING

When you have planned the designated areas of your open plan living, your next priority is how you are going to store everything.

Relaxing areas will need storage areas for your DVDs, games consoles, books and possible hobby items. Think about where you will want your TV and we can create a stylish fitted

wall-mounting in the Fusion-Luxe Range, plus you could include a floating media storage unit for your Sky box, DVD, games consoles and all the other items you would like to hide away. If you would like a more traditional scheme you may like to take a look at a TV unit and storage unit in the Contour Range. We have many other designs for you to choose from that will fit with your style.

You can continue the custom made storage solutions in the dining area where you will need storage for crockery and glasses and table linen, to possibly craft items and stationery.

If your children are still small, then there will also be toys to think about, the smaller the children, the bigger their toys seem to be. You probably don't want to be moving them around all the time, nor do you want to be tripping over them, so to avoid both, you will want to be able to store or hide them away.

Now that you know the areas you are going to have within your space, as well as the furniture you are going to use and the activities you know will take place, you will be able to see where you may have a shortfall of storage.

If space is at a premium, at Custom World we can create clever fitted storage units that can be made to measure to exactly fit your space and requirements, however awkward that space is. After all, we are all very different, why would we all want the same solutions.

CREATING SPACE WITHIN SPACE

In a big room there is a danger of misusing space and losing valuable storage. The room below is a good example of how to create two usable rooms out of one bedroom, with the clever use of sliding doors as a great looking divider!



1. Central Mirror Sliding Doors/Black Wave Glass Sliding Door.



2. The doors slide open to reveal the Walk in Wardrobe.



3. Interior of Walk in Wardrobe/Pull-Out Shelves/ Shoe Drawer.



4. Interior of Walk in Wardrobe/Internal Drawers/Long and Short Hanging.

Getting Your Wardrobe Just Right

We want you to be over the moon with your new wardrobe and we will work hard to make sure everything is just right. That includes making sure all of your clothes feel at home in their new space.

For your peace of mind and to make sure there is good air movement and ventilation, we don't recommend putting backs

in your wardrobe. However if you want backs fitted we can do that and we can also put vents in as well.

Remember we want you to have the most perfect wardrobe for you and if you have any questions, just ask, we are happy to help.



WHEN YOUR SPARE ROOM IS NOT SO SPARE

Most of us have a spare room that is quite often used as a bit of a dumping area, with either no real purpose or so many purposes it does none of them well.

If you are anything like the rest of us when a guest comes to stay, you spend time tidying up and trying to find places for everything. The problem is, spare rooms have

a tendency to feel cold and unloved.

Wouldn't it be nice if your spare room was ready for all eventualities at a moment's notice?

A room that you could walk into and straight away begin what you needed to do, even if it is the ironing or a project for work!

The downside is your spare room will no longer be spare, you will have to find it a new name. The good news is you can update this room in 5 easy steps.

1 Take a big step back and think about what you are currently using your room for. It may be your guest bedroom but you mainly use it for a study. Or you may only have guests once or twice a year and end up using the room mainly to store items.

Also think about what you would like to use the room for. Do you love your music and would love to have a room where you could practise in peace or listen to your favourite tracks. Have you always dreamed of a games room, your own home cinema or a space to be creative?

2 Now plan out the space, do you need the room to be multi-functioning?

- Our built-in work space and storage units will keep your work and study notes safe when you have guests to stay.
- Our built-in wardrobes and storage will finally give a proper home for everything.

Whatever you need your spare room to be, we have a solution for it.

3 Next sort out all of those little jobs in the room that you have been putting off.

4 Think about the décor in the room. Spare rooms are often left, just as they were when you bought the house, quite often they feel cold. At most they may get a fresh coat of paint, but you are going to be spending more time in this room so you will want it to be a colour you like.

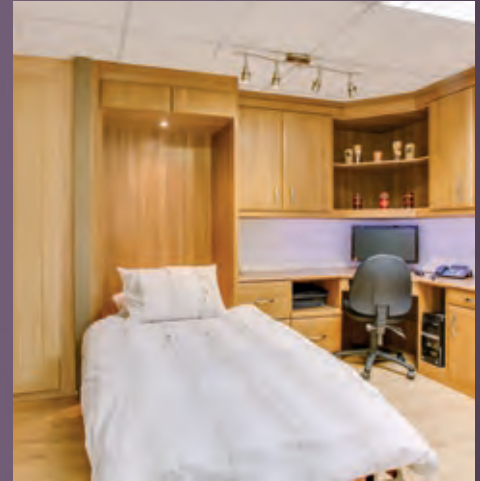
5 Bring the whole room together with our multi-functioning furniture, the storage to ensure your room always looks great, the great colours and maybe even a plant. Well, you will be able to keep an eye on the plant now that you are using the room a lot more.

6 One of our integrated wall bed systems or fold-away beds, (see opposite page), will give you more useable floor space. They are designed to look like a wardrobe and mean you only need the bed out when it is needed.



Fusion Range (Beech/White)

Integrated wall bed systems



Go beyond kerb appeal

People often ask us whether our business does better when the property market picks up. This is a very good question and....the answer is actually 'no'. That is because people have our furniture fitted no matter where the property market is; which is for a number of reasons.

Firstly, if the housing market is slow with fewer people moving home, we find that homeowners tend to spend money on their existing property; whether this is on a new kitchen, a new bathroom, better bedroom storage or all of these.

This has two benefits, the first one being that the money spent on the home you are living in, can be enjoyed by you during the rest of your stay. The second benefit is that, when you do decide to sell, the property will look so much better with good quality furniture throughout.

“With fitted furniture you always get more storage space, because it is usually fitted from wall to wall and from floor to ceiling. This not only means you’ll have plenty of storage space to clear away clutter, but also means your home will look enhanced to the people viewing your property.”

The other reason customers continue to fit our furniture, even in a slow property market, is that they are also looking at ways to increase the size of their existing property. This can be achieved by, either converting the loft or by building an extension on the side; both of which have been made easier with the new planning rules.

Both of these routes, if done right, can add more value to your home and could even add more in value to the property than the building work actually costs.

With any extension, especially with a loft conversion, you may end up with a room with sloping ceilings, which can pose a problem for choosing your furniture. However, if you use fitted furniture, this is built into the slopes of the ceilings, thus making good use of all the space available and making your loft conversion the perfect option.

If you have a three bedroomed house and convert the loft to an extra bedroom, this suddenly puts your house into another category



of home. The other type of home we see plenty of, certainly in the Dorset area, is bungalows, which in most cases convert very well into chalet style bungalows. With this type of conversion, you could end up with considerably more space being added to the house and therefore, plenty of extra value too!

It is always a good idea to consult with your estate agent when considering improving your property, even if you are not looking to sell immediately.



Custom
WORLD
EST 1982

the space™
experts

You'll be able to relax whilst your designer goes through our extensive range of options, highlighting the benefit of each, with the aim of helping you to design your ideal solution to perfectly match your personal living space. Your designer will also explain how your furniture will be hand made in our local workshop by our team of skilled joiners. Your furniture will then be carefully installed in your home by one of our employed fitters, to the highest quality you'd expect from a business that has been around since 1982.

Christy Doors
(Winchester Oak
with Frosted Glass
Square Inserts)

Top tips for wardobes

1. Hide away an office desk or dressing table to give bedrooms a clean and uncluttered look.
2. Incorporate your TV behind closed doors.
3. Create 'His and Hers' spaces by neatly dividing up your wardrobe.
4. Create a neat storage solution for those everyday items like the vacuum cleaner and ironing board.

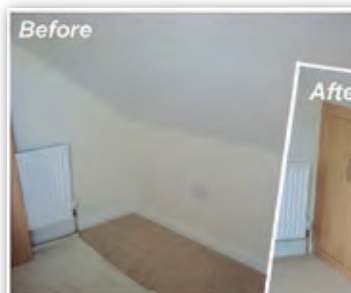
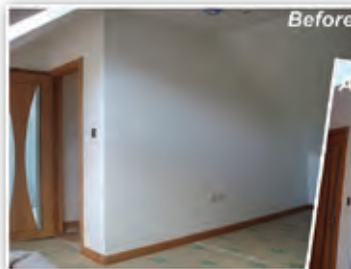
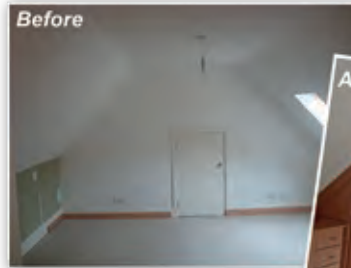


No space too big or too small

Every room is different, with varying ceiling heights, room shapes and wall measurements, so before the designer can begin drawing your plans, they will need to measure up. There are also those awkward spaces, possibly a sloping ceiling or two, radiators, skirting and windows to take into account. Don't let alcoves become a problem. With the correct design they can become a valuable part of your storage solution.



Scan to watch one of
our Fitters in action!



BEDROOMS

MODERN CLASSIC DESIGN



Contour Range (Arch Tramlines/Minau Birch)

HAVE YOU
SEEN?

View Custom
Headboards
See Page 23

Simple lines combined with subtle wood effect colours can create a timeless look in any room.

Our Satus and Contour Range colours go from a clean White and a subtle Ivory through to the richness of French Walnut and Opera Walnut, with a wide choice of colours in between.

Choose a simple line, a shaker style or add interest with an arched tramline design on your doors and drawer fronts to create beautiful storage solutions for any room.



Walk in Wardrobes



CLEAN LINES

Keep your walk in wardrobe neatly organised by having a symmetrical design each side.

With clean lines of shelves and drawers, everything is easy to find and accessible. Create a wall of mirrors for both practical and aesthetic purposes. The mirrors will create light and space in smaller walk-in wardrobes.

A CENTRAL OTTOMAN WITH DRAWERS IN WILL DOUBLE UP AS A SEAT AND ADDS EVEN MORE STORAGE SPACE.

MAXIMISE YOUR SPACE

Many people think you have to have a large room for a walk in wardrobe.

However, even the smallest or narrowest room can be used as a walk in wardrobe or dressing room.

Your designer can help you to maximise every inch of space to create a room that will provide the perfect storage solution whatever the size.

Mirrors and lighting can be cleverly incorporated to give a spacious look to the room, and you will be surprised at the amount of extra storage that can be gained by using fitted furniture.

Getting dressed has never been so easy!



HAVE YOU SEEN?

Creating Space within Space
Page 9



Sliding door wardrobes

Sliding door wardrobes are ideal for rooms where space may be limited.



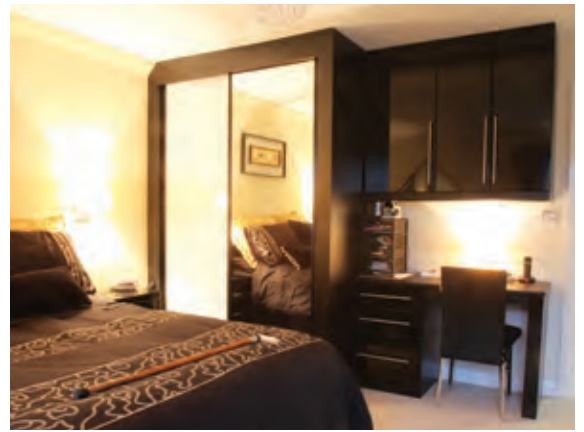
MIRRORED, COLOURED AND PATTERNED GLASS AND FROSTED DOORS.

- Our sliding wardrobe doors are available with either steel or aluminium door frames, both in a variety of profiles and colours.
- With your doors made specifically to measure, you can create the look of space in any room by using mirror doors.
- Alternatively, add coloured or patterned glass doors to create a feature wall and give a unique look to any room.
- Frosted doors lighten up a room and add interest to your wardrobe.





Satin Bronze glass/Bronze tint mirror

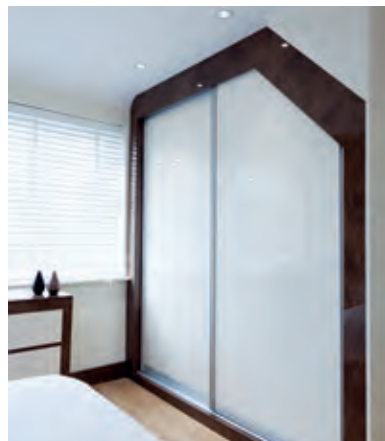
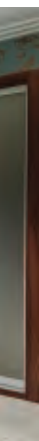


ANGLED WALLS AND SLOPING CEILINGS

- Our experienced designers will help you to decide the best storage options for your room, and having awkward angles doesn't mean you need to be restricted to hinged doors.
- We use the unique Raumplus System, which allows us to make angled frames for sliding doors. Because they are made to measure, our fitters are able to install your angled sliding doors to follow the contour of your wall or ceiling, so that all of your space is used to the maximum.
- In angled rooms with sloping walls or ceilings, you can create light, space and storage without having to compromise on style.

PLAIN OR SCULPTURED PANEL DOORS AND LAYBARS

- Choose from our wide range of sculptured design doors to give a subtle look to any room. Combine with mirror or coloured glass doors to create a unique wardrobe that is both stylish and functional.
- Add Laybars to your doors and mix and match panels with coloured glass or mirrors to create a contemporary look to your room.



Design your sliding doors with our website Sliding Doors App. Just Scan the link below.



Hinged door wardrobes

Create storage that not only looks stunning but works for you, by combining practicality with style at an affordable price. Your furniture will be designed and made to fit perfectly to maximise every inch of storage space available. With a wide choice of colours and designs, there is a Range to suit every taste and budget.



SLOPING CEILINGS AND AWKWARD SPACES

WITH THE RIGHT DESIGN, EVEN THE MOST DIFFICULT SPACES CAN BE USED FOR STORAGE.

- Fitted furniture is the perfect solution for loft conversions or difficult angles. You can really use every inch of space by designing the furniture around the contours of the ceiling and when installed by our carpenters, your furniture will fit seamlessly, however awkward the space is.
- Choose from any of our Ranges to create storage in any space, even the ones you thought were impossible!



Fusion Luxe Range (Copper Stone/Ivory)

CONTEMPORARY OR TRADITIONAL DESIGN

Custom World has a range of contemporary colours and designs to choose from, all at a surprisingly affordable price.

- Our Satus range is an elegant but economical solution.
- The Contour range brings further design choices with a range of patterns and finishes.
- Our state of the art Fusion and Fusion Luxe Range offer the latest in door technology with the ultra violet heat sealed lacquered finish designed to stand the test of time. With a range of exciting colours to choose from, you can create a truly unique look to any room.
- Our Neuva High Gloss range can be used with a wood effect carcass to create a stylish addition to any room.



Wardrobe interiors

With fitted furniture you can have your own choice of wardrobe interiors to suit your storage needs. With made to measure furniture you can have all the flexible storage you could ever need, without valuable space being wasted. Fitted furniture can provide up to 50% more storage space over freestanding furniture, as it is usually built from floor to ceiling and wall to wall.

HANGING RAILS AND PULL DOWN RAILS

- Choose from long hanging for dresses, coats, long skirts, trousers and jackets or double hanging for shirts and blouses. You can have any combination of hanging to make your storage space work for you.
- Hanging rails can be fitted to any height to suit you and your needs. Pull down hanging rails are an ideal solution if you want to create extra hanging at a higher level. The central bar enables you to pull the hanging rail down to make clothes easily accessible, allowing you to create more storage at the bottom of your wardrobe.

.....
WHATEVER YOU CHOOSE, YOU CAN BE ASSURED OF A QUALITY FINISH ON ALL YOUR INTERIOR FITTINGS .





INTERIOR SHELVES AND DRAWERS

WORKING WITH YOUR DESIGNER, YOU CAN CREATE THE PERFECT STORAGE LAYOUT, WITH A PLACE FOR EVERYTHING.

- Interior shelves are ideal for folding away those bulky jumpers and sweatshirts. Or you can put baskets on the shelves to keep toiletries or hairdryers in for easy access.
- Shoe shelves can be adjustable so you can organise your shoes and boots and pull out shoe trays mean your footwear is always easily accessible.
- Interior drawers can be made to any depth, width or height. You may want a couple of smaller drawers for underwear or larger drawers for T-shirts. Drawers mean that you can keep smaller items organised, and drawer dividers can be added to organise ties, belts and scarves.
- You can even create a dressing table in your wardrobe.



LITTLE THINGS THAT MAKE A BIG DIFFERENCE!

- Storing those everyday items such as ties, scarves and belts can be a problem. Tie rails attached to the interior of your hinged doors create the perfect solution without taking up any of your hanging space.
- For a practical touch, add an interior mirror to a hinged door.
- We know that maximising the interior storage of your wardrobe is important, which is why we create made to measure interior storage that works for you.
- Get easy access to your shoes by adding pull out shoe trays, or add shoe rails at the bottom of your wardrobes to keep shoes neat and tidy.

Custom Made Beds

What better way to complete your new room, than by having a custom made bed to match your furniture colour and design.

BEDS WITH EXTRA STORAGE

OUR DESIGNERS CAN INCORPORATE A CUSTOM MADE BED INTO YOUR ROOM DESIGN, TO PROVIDE EXTRA VALUABLE STORAGE WHICH IS EASILY ACCESSIBLE.

The bed base will be built to any mattress size, and you can have deep drawers which are ideal for shoe storage or shallow drawers which are perfect for storing T-shirts, jumpers or folded trousers.

The drawers are also an excellent place to store that bulky extra bedding that can take up a lot of room.

Whatever you decide, you will have lots of extra storage, without taking up any extra floor space, and a bed that matches your furniture. Add a custom made headboard to complete the look and create a stylish feature to your room.



HAVE YOU SEEN?
Children's Cabin Beds See page 32

PULL DOWN BEDS

IF YOU HAVE A SPARE ROOM OR GUEST ROOM, QUITE OFTEN THE BED TAKES UP A LOT OF ROOM, BUT IS ONLY USED OCCASIONALLY, WHICH MEANS YOU DON'T USE THE ROOM EFFICIENTLY.

Pull down beds are incorporated in your room and designed to look like a wardrobe. They are very easy to pull down, and you can store them with a pillow and quilt on, so it takes minutes to get the bed ready for your guests.

The clever design means they only take up a small amount of floor space when closed, and to maximise the use of the room you can incorporate a fitted worktop, which can double up as a desk for a home study or a dressing table for your visiting guests. You can build in drawers and cupboards and further wardrobes to really maximise your storage and work space and make the most of your room.



HAVE YOU SEEN?
Studies See Page 28

CABIN BEDS

THESE ARE THE PERFECT SPACE SAVING SOLUTION FOR ANY ROOM, NO MATTER HOW SMALL.

By incorporating cupboards and drawers under the base of the bed, you get maximum storage space without taking up floor space.

Top cupboards above the bed provide further storage and by adding a shelf underneath, there is further storage which is ideal for books, CD's or DVD's.

You can have a bedside unit, dressing table or work station built from the bed to an adjoining wall or end panel. A wardrobe can be easily incorporated to create an amazing amount of storage in any size room.

Matching Accessories

Complete your room by adding practical accessories to match your furniture.



Nueva Range (Opera Walnut/Ivory)



MIRRORS

- Free-standing dressing table mirrors fit perfectly on your worktop and will compliment your furniture as they are made to match.
- Choose from a stylish modern mirror, with clean cut square edges to go with our Fusion and Fusion Luxe Range, or our modern classic mirror can match any colour in our Contour Range.
- If you prefer a wall framed mirror, you can choose any colour and any size, combining practicality and style to create a feature on your wall or the end panel of your wardrobe.



STOOLS AND OTTOMANS

- These also come in colours to match all our ranges, and if you want a padded seat we offer a wide choice of cover materials. If you prefer to use your own material, we can upholster this for you, as long as the material comes with a fire safety certificate.
- Our modern stools have a square base and our modern classic stools can match the design and colour of your furniture.
- An ottoman is an excellent solution to create more storage, whilst adding a practical seat for your room and can be made to any size.

HEADBOARDS AND BACKBOARDS.

- Headboards can be made to any size and can be covered in any material from our wide choice of colours, or from your own material. For a contemporary look you can combine 2 or 3 headboards going from the bed up to the ceiling or top cupboards. This is the perfect addition to our Fusion Luxe Range.
- Create a bright and unique look to your child's room by adding a patchwork of padded squares to make up a headboard. (See Front Cover image)
- You can also have a backboard, without padding, to match any of the colours and designs in all our ranges. These can also be made to any size too.

LOUNGE UNITS

**FITTED
FURNITURE**

**CAN ALSO CREATE THE
PERFECT STORAGE
SOLUTIONS FOR
YOUR LOUNGE**



Nueva Range (Opera Walnut/Cappuccino)



LOUNGE STORAGE

IF YOU HAVE A FIRE PLACE IN YOUR LOUNGE, THE ALCOVES EITHER SIDE OF THE CHIMNEY BREAST CAN BE WASTED SPACE.

By designing furniture that is sympathetic to the shape of the alcove and to your room, you can create extra storage units that fit seamlessly into the space either side of the chimney breast.

Fitted furniture can also become a practical feature in your room, as this window seat shows. Additional seat pads create a practical seat on top of the storage cupboards.



STYLISH STORAGE BOOKCASES

FOR COLLECTORS OF BOOKS, A FITTED BOOKCASE IS A MUST.

You can have open bookcases or have them fitted with solid doors or glass insert doors to keep them protected and dust free.

Extra top cupboard storage can hide more books or magazines and are ideal for storing photo albums that are out of the way, but still easily accessible. Radiator covers can also be made to any size, which means you don't have to worry about creating your room around them, as you can incorporate them into your design.



Fusion Luxe Range (Macassar/White)



HAVE YOU SEEN?
 Freestanding Furniture See Page 35



Television Units

With today's televisions getting larger, it can be difficult to find units to fit your television and to house your DVDs.

Our Designers will work with you to create the ideal television or stereo unit and incorporate storage for your DVD's, CD's and game consoles.

The beauty of fitted furniture means that you can keep all those unsightly wires hidden away. With built in spaces for DVD players and XBoxes, you can house all your entertainment equipment neatly and stylishly.

HOME OFFICES & STUDIES

More people are working from home these days but it is important to keep work and home separate. If you are not careful the kitchen table can become your work desk, making it easy to lose paperwork and impose on family life, so a fitted home office in a spare room is the ideal solution.





Contour Range (Stepped Art Deco/French Walnut)



HAVE YOU SEEN?
 Children's Study Bedrooms See Page 33

HOME OFFICE

- It is important to create the right working space and environment. Your Designer will help you to incorporate those things that are important to you to help organise your workspace.
- Making your workspace functional does not mean you have to compromise on style. With a wide choice of colours and designs to choose from, you can keep all your paperwork tidy in a stylish setting.
- Even the smallest room can have office furniture designed to incorporate the essential things such as a desk and file drawers. Our experienced Designers have created work stations in the most confined spaces.
- With all your office furniture being made to measure, it really will be designed to suit your requirements.

FUNCTIONAL OFFICE FURNITURE

- Creating custom made storage ensures that everything in your office has a home, thereby keeping it organised and tidy.
- Base units can be used to house a computer tower, which helps to reduce dust collection, but is still accessible, always making sure it is well ventilated.
- Wall cupboards can be designed to any size and come with adjustable shelving, so all your files and paperwork can be easily stored away.
- If your office is in a loft conversion with angled walls and sloping ceilings, your designer will use the contours of the walls to maximise every inch of storage space.





HAVE YOU SEEN?
Pull down beds on Page 11

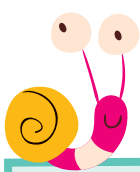


HOME STUDIES

- If you don't run a business from home, but have a hobby that you need a room for, you can combine a guest bedroom with a home study.
- You can create work stations and storage spaces for everything you need, whether it is lots of shelves for arts and crafts or drawers for materials or art pads.
- Adding a pull down bed into the room design, means that you have a guest bed that is ready in seconds, but doesn't take up floor space when it's not being used. This means that your home study is easily accessible and everything can be tidied away when your guests arrive!

CHILDREN'S BEDROOMS

We have developed an exciting range of options for fitted and freestanding furniture that will grow with your children.

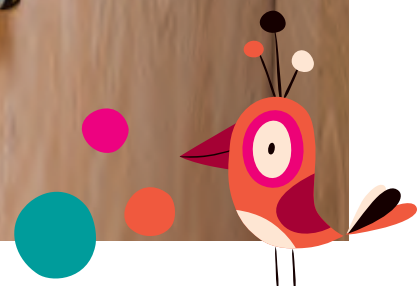


CABIN BEDS

THESE ARE THE PERFECT SPACE SAVING SOLUTION FOR ANY ROOM, NO MATTER HOW SMALL.

- By incorporating cupboards and drawers under the base of the bed, you get maximum storage space without taking up floor space.
- Top cupboards above the bed provide further storage and by adding a shelf underneath, there is further storage which is ideal for books, CD's or DVD's.
- You can have a bedside unit, dressing table or work station built from the bed to an adjoining wall or end panel. A wardrobe can be easily incorporated to create an amazing amount of storage in any size room.

Contour Range (Rebated Shaker/Montana Oak)





HAVE YOU SEEN?

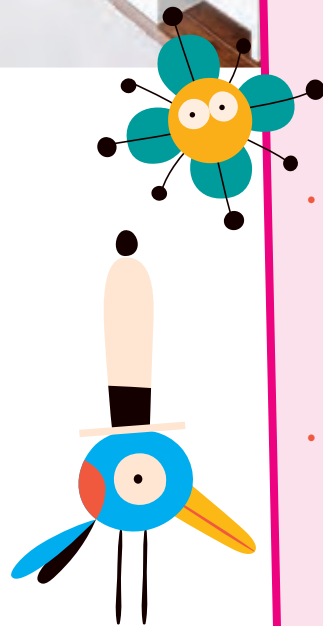
Kids room tips on Page 7

Satus Range (Trafalger Square/White)



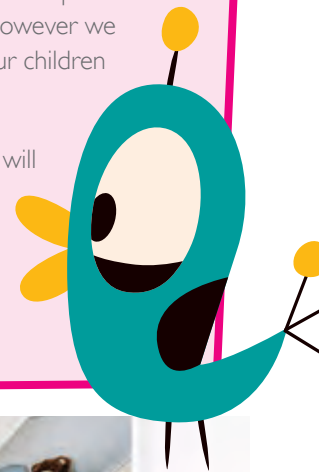
CHECK OUT AN OLDER CHILD'S STUDY ON PAGE 28

We can custom design and build a wide variety of units and complimentary furniture.



WORK STATIONS, DRESSING TABLES AND STORAGE

- Adding a work station or dressing table will give a valuable work surface for homework or applying make-up as they get older. With drawers fitted underneath, extra storage is automatically created.
- Add bookshelves and cupboards to store games and toys so there is a place for everything. We can guarantee to provide valuable storage solutions, however we can't guarantee to make your children tidier!
- Our experienced designers will work with you and your child to discuss practical storage options that will grow with them and give them a room they will love.



MAKE IT PERSONAL!

- Our experience in fitting children's bedrooms has shown us how they love to make their bedroom personal. Why not add one of our personalised name boards to the side of your child's bed or as a fascia under their top cupboards. You can even have it wall mounted to create a unique backdrop to their work station or dressing table.
- Create unique headboards by mixing and matching materials and designs to create inter-changeable pads to brighten up any room.
- For either sliding doors or hinged doors, you can design interiors to accommodate storage boxes, sports bags, televisions, computers, X-boxes etc. as well as hanging space.





BATHROOMS

Contour/White rebated shaker

Bathrooms are often one of the smallest rooms in the house and can be an awkward shape. This makes it even more important to maximise the space available through intelligent design of sink and storage units. Storage may be used for toiletries and laundry, whilst tabletop areas need to convey a sense of order and calm.

More and more people are used to the boutique bathrooms associated with hotels they stay at, so quality is paramount. Custom World can create dream bathroom units to suit any space, matching your practical storage requirements with clever features and beautiful finishes.





Nueva - White gloss/French Walnut



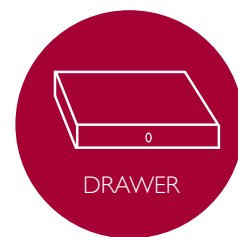
FREESTANDING

AND MORE...

We can custom design, build and install a wide variety of freestanding and other complimentary furniture storage solutions to make the best use of small and awkward spaces.



FINISHING TOUCHES



There are lots of things to consider when deciding what sort of furniture you would like. There are lots of details to think about, but one thing you won't have to worry about is the quality of your furniture and the way it is fitted. We take care of that for you!

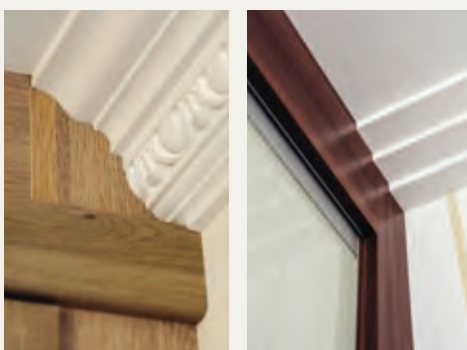
ATTENTION TO DETAIL

At Custom World, we only use our own fitters. We do not contract out any of our work at all.

This means that you are assured of a quality installation every time, where our fitters go that extra mile to make sure your furniture fits perfectly.

Coving, picture rails and skirting boards are all neatly scribed around, so that your furniture follows the contours of your wall with no unsightly gaps.

Finally your fitter will tidy and vacuum the room at the end of the day.



QUALITY PRODUCTION

Your furniture will be made by our team of skilled craftsmen who take pride in ensuring that every component of your furniture is quality checked.

All your drawer boxes will have 18mm thick sides with the drawer bases being secured by base-fix runners.

File drawers, CD and DVD drawers all come with fully extendable runners, so that the whole of the drawer interior is exposed when the drawer is open, giving you full access to the drawer contents.

Soft close runners can also be fitted on your drawers.



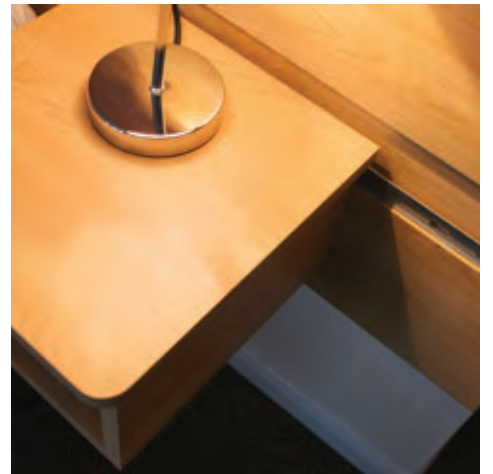
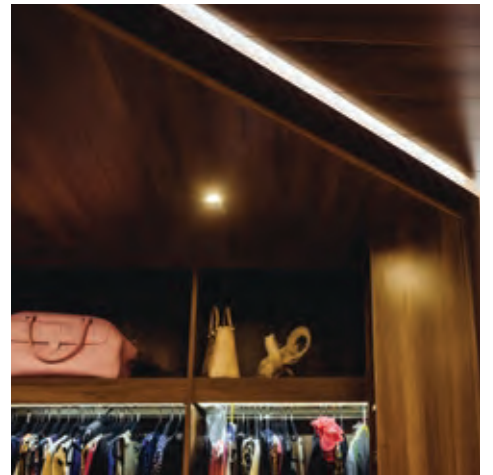
STAYING POWER!

We use hydraulic stays on our lift-up top cupboard doors, which give a smooth opening and closing action. All our full height hinged doors have a minimum of four hinges to give extra support when opening and closing your

doors. Soft close hinges come as standard on all our furniture.

For angled doors built into the eaves, we fit 170 degree hinges to enable the door to open right back to give full access to the wardrobe interior.

On our angled sliding doors, we use the innovative Raumplus system, which is leading the way in angled aluminium sliding doors.



SPECIFICATIONS FOR HINGED & SLIDING DOORS

TRULY
BESPOKE

Custom World do not build modular units. We design and build to exactly suit your space and storage requirements.

HINGED DOORS

- Hinged wardrobe doors require extra space to enable them to open into the room.
- Your hinged wardrobe can be built to any height, width or depth - Please ask your designer.
- Usually our hinged wardrobes have a floor built-in.
- Includes a full width top shelf with space above, right to the ceiling.
- No standard door sizes. All hinged door sizes are custom made to fit your space.
- Discuss the advantages and disadvantages of built-in backs in your wardrobe.



Fusion Luxe Range
(Copper Stone/Ivory)

SLIDING DOORS

- Unlike hinged wardrobes, sliding doors don't require space to open up into the room.
- Your sliding wardrobe can be built to any height, width or depth - Please ask your designer.
- Sliding doors come with a choice of mirror, panel, sculptured, frosted or colour glass.
- No standard door sizes. All sliding door sizes are custom made to fit your space.
- Includes a full width top shelf with space above, right to the ceiling.
- There are no floors in our sliding wardrobes so you get maximum storage facilities, especially for shoes.
- Discuss the advantages and disadvantages of built-in backs in your sliding wardrobe.



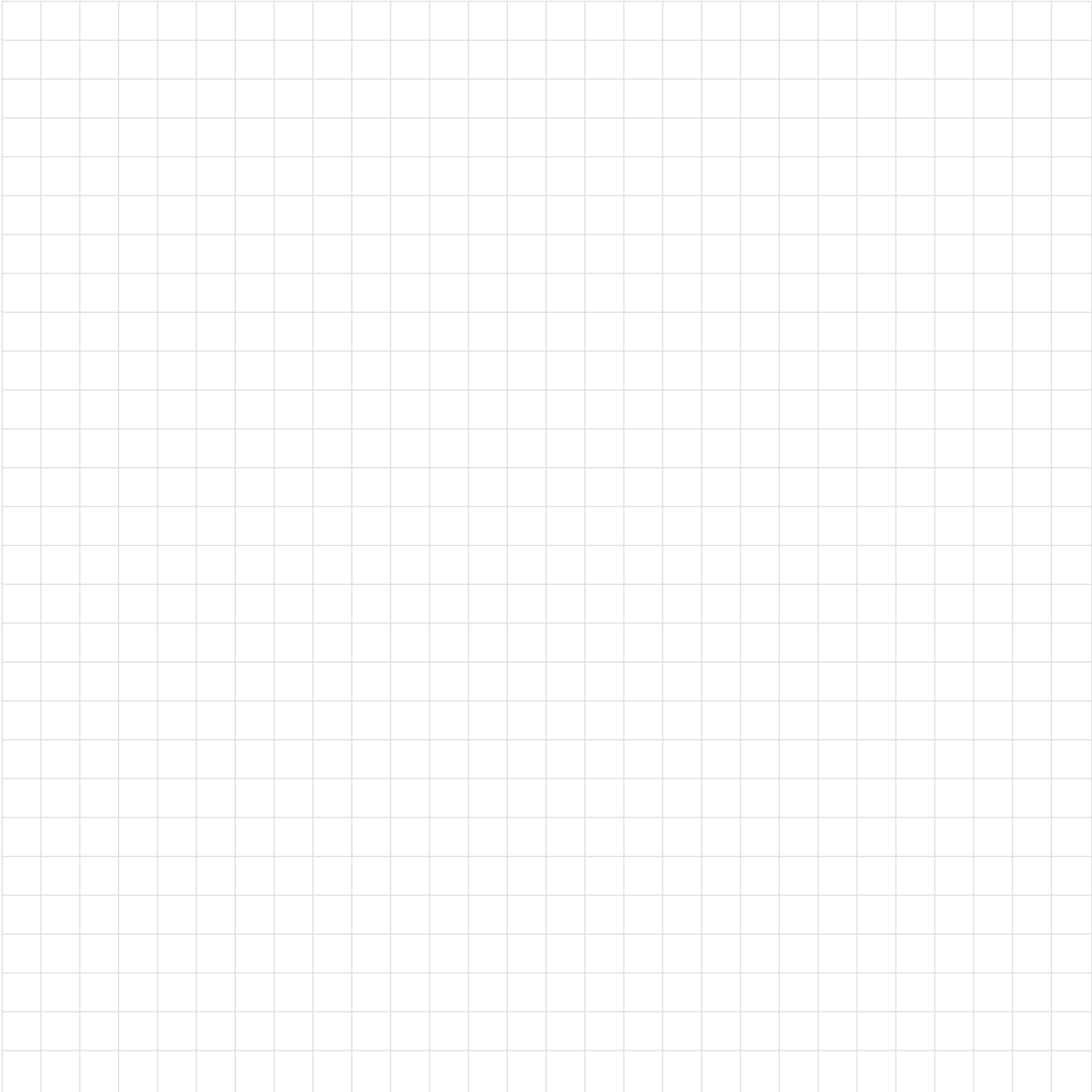
Ivory/Satin Bronze/Cappuccino Glass

Design your sliding doors with our website Sliding Doors App
www.customworldbedrooms.co.uk



YOUR SKETCHES AND IDEAS

To help you, we've created a design area for you to keep your ideas and thoughts together, in preparation for your free design visit.



FREE Design Survey

Book your no obligation appointment with one of our experienced designers today.

📞 Call: 01202 896816

🌐 Click: www.customworldbedrooms.co.uk

@ Email: office@customworldbedrooms.co.uk

Here are the 4 STEPS to creating your fitted furniture

1 YOUR FREE DESIGN VISIT FOR FURNITURE STARTING AT REASONABLE PRICES INCLUDING VAT AND FITTING

We know that choosing fitted furniture for the first time can be a little bit daunting, so we give you as much time as you need to spend with an experienced designer, which makes the whole process easy, fun and enjoyable. Telephone on 01202 896816 or email us to arrange for one of our experienced **designers to call at your own home for a free, no obligation design appointment.** You can discuss your requirements with **the designer to receive professional advice on your own personal design.** It's easy to arrange your FREE Design Survey. Just call us today.

2 VISIT OUR LOCAL SHOWROOM IN DORSET

You will be able to choose the style and colour of your bespoke furniture and take as much time as you wish. Our **friendly showroom staff will give you a warm welcome and will discuss your design with you in a relaxed and unrushed manner.** They are there to help you decide upon your made to measure fitted or freestanding furniture and will answer any queries you may have. Our showroom is open **6 days a week from 9am to 5pm Monday to Saturday or by appointment on Sunday.**

3 ARRANGE YOUR PERSONAL FITTING DATE

Once you are happy with your designs we will book a convenient fitting date for your furniture to be installed. The bespoke furniture will then be carefully hand made by **one of our skilled workshop craftsmen in our workshop in Wimborne.** Your Furniture will then be delivered to your **home and installed by one of our professional fitters.**

4 FITTED FURNITURE INSTALLATION

The fitting of your bespoke furniture will be carried **out by our professional in-house fitters.** The installation **is always undertaken with the utmost care and attention to detail,** ensuring minimum inconvenience and maximum satisfaction. You will receive the highest-quality floor to ceiling built-in furniture completely made to measure, with a full 10-year guarantee and with prices starting **at reasonable prices, you can't go wrong.**

Interest free credit is not available at Custom World

All product descriptions and pricing correct at time of going to press. Unfortunately due to the sheer number of available ranges, colours and options, not all can be shown in this brochure. Please consult your Custom World designer for your perfect solution.

REASONS TO CHOOSE US - WHAT YOU GET...

- 1 - Quality hand-made fitted furniture
- 2 - A FREE design survey
- 3 - Get up to 50% more storage space
- 4 - Furniture which is designed to fit any space
- 5 - Reasonable prices to suit
- 6 - A FULL 10 year guarantee
- 7 - GREAT VALUE

Custom WORLD

EST 1982

FOR STORAGE SOLUTIONS,
SEE MORE INSIDE



SOLUTIONS

Custom WORLD the space™ experts

You'll be able to relax whilst your designer goes through our extensive range of options, highlighting the benefits of each with the aim of helping you to design your ideal solution to perfectly match your personal living space. Your designer will also explain how your furniture will be hand made in our local workshop by our team of skilled joiners. Your furniture will then be carefully installed in your home by one of our employed fitters, to the highest quality you'd expect from a business that has been around since 1982.

Cherry Quercy (Windsor Oak with Fossil Glass Square Inserts)

No space too big or too small

Every room is different, with varying ceiling heights, room shapes and wall measurements, so before the designer can begin drawing your plans, they will need to measure up. There are also those awkward spaces, possibly a sloping ceiling or two radiators, skirting and windows to take into account. Don't let it also become a problem. With the correct design they can become a valuable part of your storage solution.

Scan to watch one of our fitters in action!

Top tips for wardrobes

1. Hide away an office desk or dressing table to give bedrooms a clean and uncluttered look.
2. Incorporate your TV behind closed doors.
3. Create bins and hampers to neatly tidy up your wardrobe.
4. Create a neat storage solution for those everyday items like the vacuum cleaner and ironing board.

CUSTOM HOME 12

FEATURES

LANDING

Don't

to change the...
...and they...
...fault...
...them be...
...of their

CUSTOM HOME 7

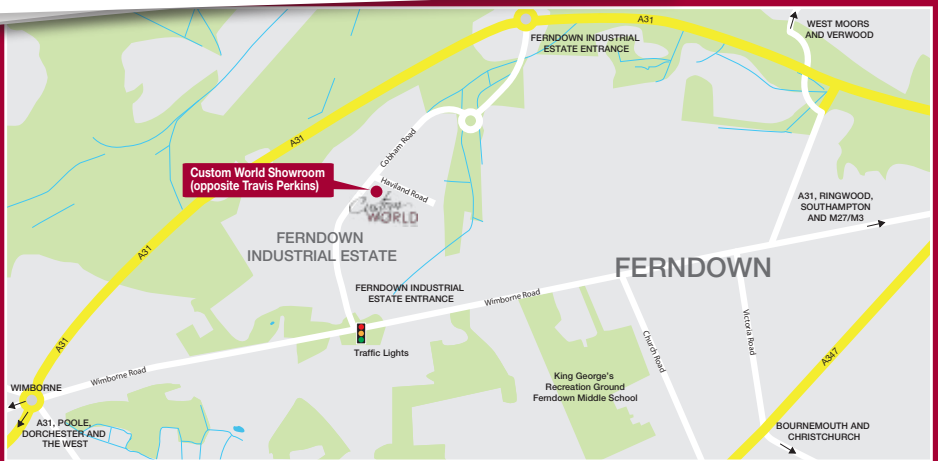
CUSTOM HOME 35

...OR VISIT OUR SHOWROOM

01202 896816

...OR REQUEST A FREE DESIGN SURVEY





Custom WORLD

EST 1982

the space™ experts

Call: 01202 896816 Click: www.customworldbedrooms.co.uk Email: office@customworldbedrooms.co.uk

Custom World Dorset Ltd
38 Cobham Road, Ferndown Industrial Estate, Wimborne
Dorset, BH21 7NP

